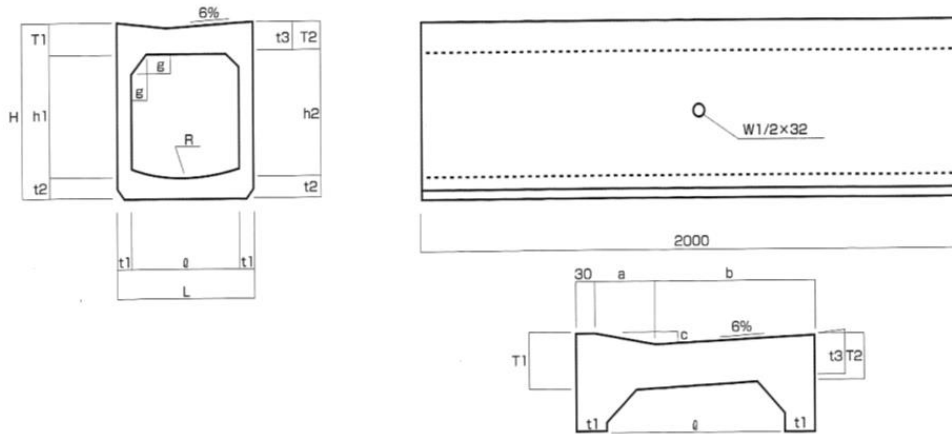
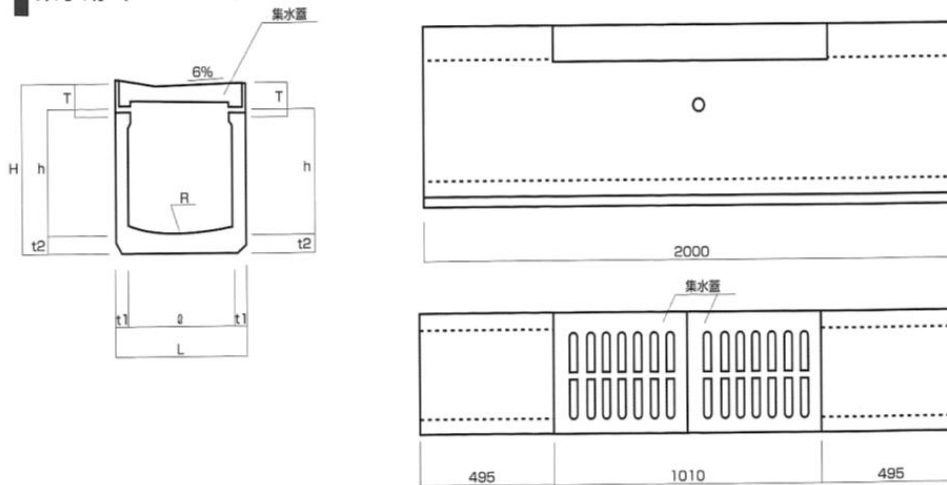


標準型 (Sタイプ)



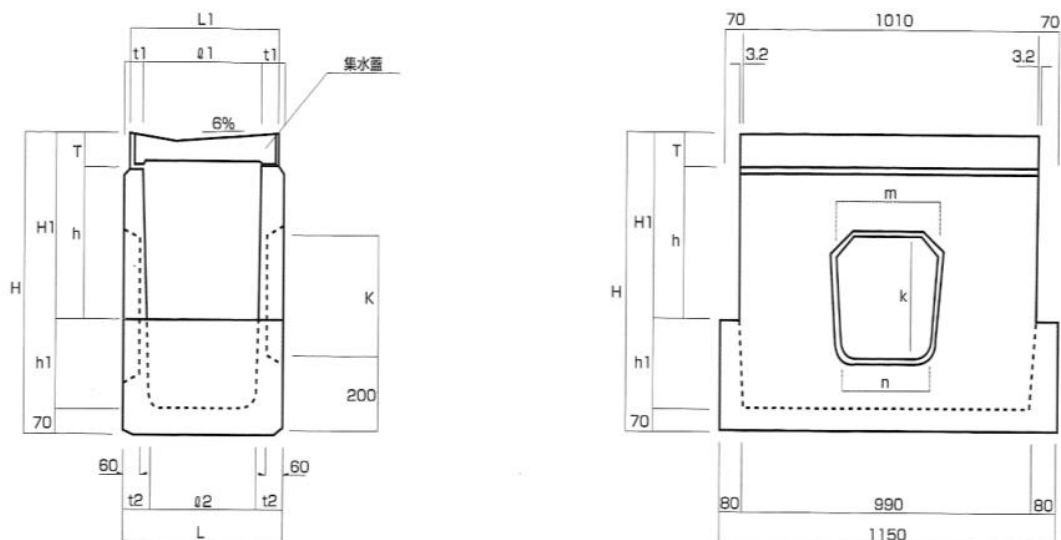
呼び名	φ	L	h1	h2	H	t1	t2	t3	g	T1	T2	a	b	c	R	参考重量(kg)
S-250	250	340	250	260	390	45	60	65	45	80	70	90	220	13	500	348
S-300	300	400	300	312	453	50	65	70	50	88	76	100	270	16	600	434
S-360 (埋設管400型)	360	460	360	376	527	50	65	80	50	102	86	110	320	19	720	539
S-400	400	500	400	418	584	50	70	90	50	114	96	120	350	20	800	611
S-500	500	620	500	521	712	60	80	105	75	132	113	160	430	25	1000	920
S-600	600	730	600	627	845	65	90	120	75	155	128	190	510	30	1200	1210

集水用 (FGタイプ)



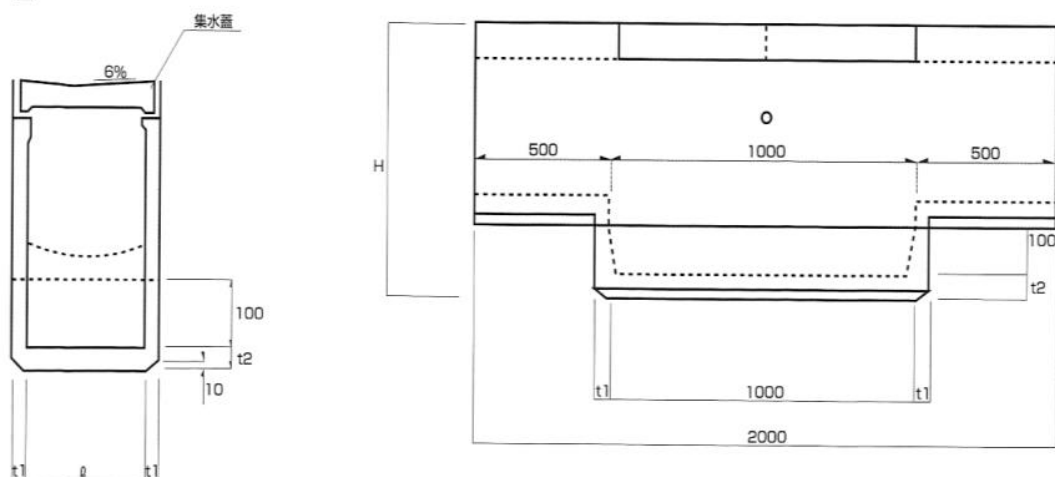
呼び名	φ	L	h	H	t1	t2	T	R	参考重量(kg)
FG-250	250	340	250	390	45	60	89	500	304
FG-300	300	400	300	453	50	65	91	600	373
FG-360 (埋設管400型)	360	460	360	527	50	65	99	720	455
FG-400	400	500	400	584	50	70	111	800	508
FG-500	500	620	500	712	60	80	132	1000	745
FG-600	600	730	600	845	65	90	147	1200	970

分水柵 (BMタイプ)

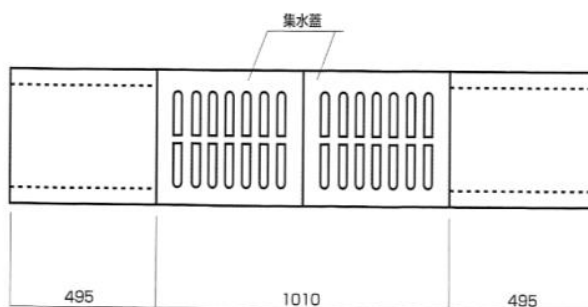


呼び名	H	H1	h	h1	L	L1	φ1	φ2	t1	t2	T	m	n	k	参考重量(kg)
BM-300	870	455	358	345	430	397	274	240	78	95	91	300	260	300	335
BM-360 (建設省400型)	870	530	425	270	490	457	334	300	78	95	99	360	310	360	395
BM-400	920	584	467	266	530	502	380	340	75	95	117	500	-	500	410

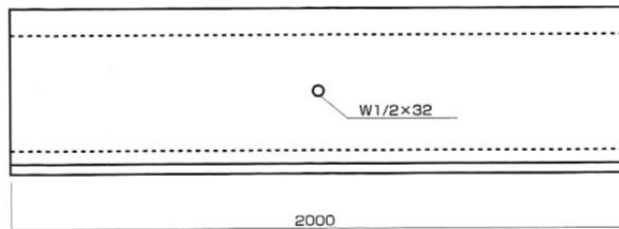
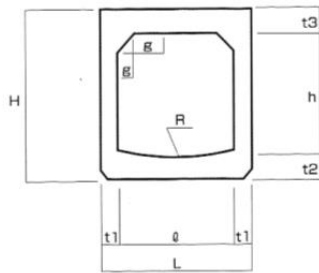
砂溜柵 (SMタイプ)



呼び名	φ	t1	t2	H	参考重量(kg)	
					本体	柵
SM-300	300	50	65	618	330	104
SM-360 (建設省400型)	360	50	65	692	393	112
SM-400	400	50	70	754	430	135
SM-500	500	60	80	892	636	165
SM-600	600	65	90	1035	822	240

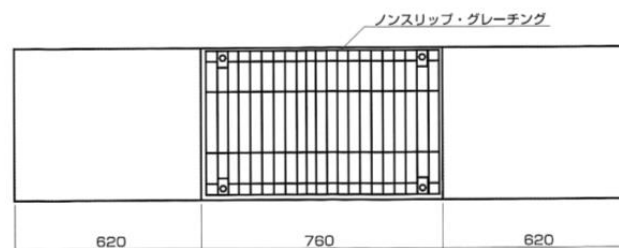
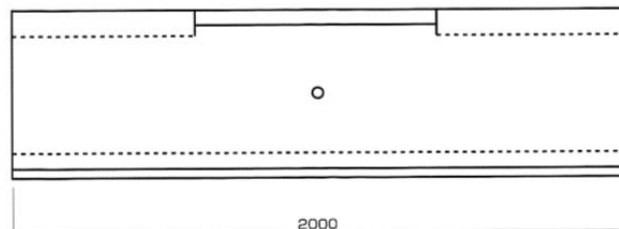
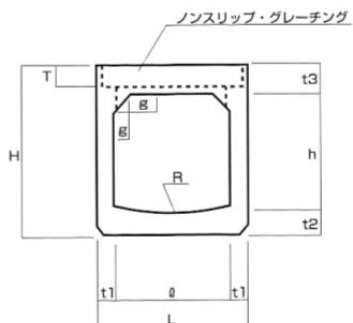


横断用 (Cタイプ)

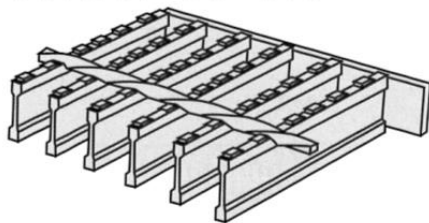


呼び名	φ	L	h	H	t1	t2	t3	g	R	参考重量(kg)
C-300	300	400	312	453	50	65	76	50	600	436
C-360	360	460	376	527	50	65	86	50	720	528

横断集水用 (CGタイプ)



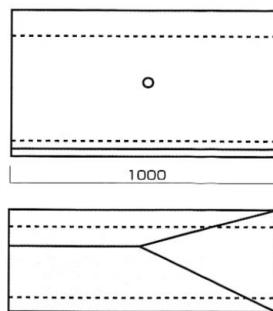
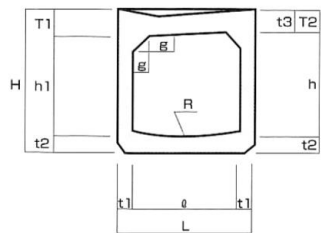
ノンスリップ・グレーチング



※断面寸法は標準形状と同じ

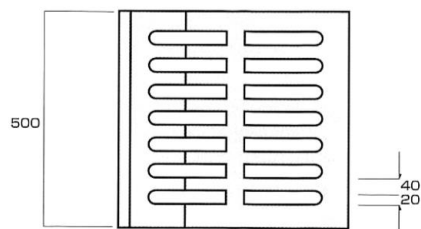
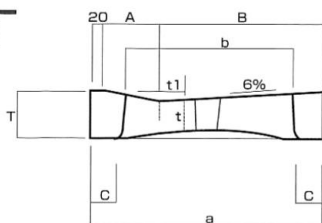
呼び名	φ	L	h	H	t1	t2	t3	T	g	R	参考重量(kg)	
											本体	グレーチング
CG-300	300	400	305	453	50	65	83	50	50	600	400	18.8

横断摺付用 (Jタイプ)



呼び名	φ	L	h1	h2	H	t1	t2	t3	g	R	参考重量(kg)
J-300左・右	300	400	300	312	453	50	65	70	50	600	220
J-360左・右	360	460	360	376	527	50	65	80	50	720	262

集水蓋



呼び名	a	b	c	t	t1	T	A	B	参考重量(kg)
FG-250用	320	210	50	50	13	89	90	210	19
FG-300用	380	260	50	60	16	91	100	260	27
FG-360用 (建設省400型)	440	320	50	65	19	99	110	310	33
FG-400用	480	360	50	70	20	111	120	340	37
FG-500用	600	215	50	80	25	120	160	420	51
FG-600用	710	270	50	90	30	135	190	500	67